



# Rutgers University-Newark Physical Master Plan

March 2015

“Failure To Plan, is Planning For Failure”

Winston Churchill

The Physical Master Plan is the  
Framework to Support the  
Rutgers University-Newark  
Strategic Plan

# Process

- **Strategic Planning Process**
- **Space Utilization Study**
- **Outreach**
  - Steering Committee
  - MyCampus Survey
  - Adjacency Tool
  - Town Halls
  - Individual & Group Meetings
- **Interpretation of the Data**
- **Prioritization of Issues**
- **Development of Potential Strategies**
- **Development of a Plan**

# Planning Principles

- Engage Newark as an anchor institution
- Advance a dynamic learning environment that honors high impact scholarship
- Reinforce regional mobility
- Implement technology for the modern campus
- Enhance the campus core

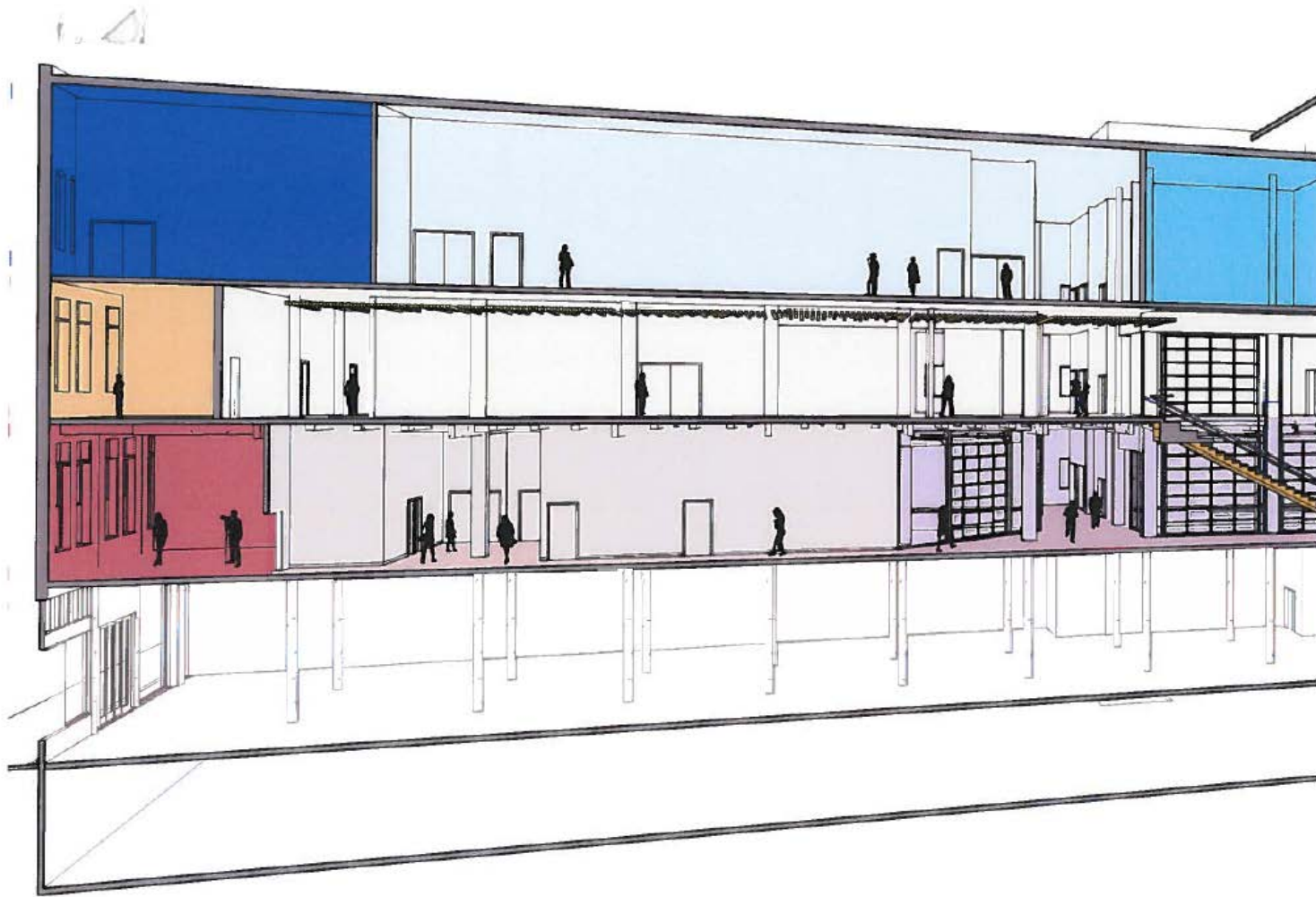


# Engage Newark as an Anchor Institution

- Revitalize major corridors of movement through campus
- Facilitate programs with K-12 schools and other partners, targeted towards supporting access to education
- Establish places – “third spaces” – where Rutgers can come together with the community and collaborate

# Hahne's & Co Department Store, *Artist Rendering*









# Advance a Dynamic Learning Environment that Fosters High Impact Scholarship

- Align classroom inventory with scheduled class sizes, while creating flexible classroom spaces that can adapt to future teaching needs and methods
- Use technology to enhance the learning experience in the classroom and facilitate collaboration
- Support out-of-classroom learning with centrally located collaboration spaces
- Improve spaces to support high impact scholarship
- Upgrade classrooms with updated technology and furniture



# Reinforce Regional Mobility

- Work with the City, NJ Transit, and other partners to improve transit connections to campus
- Increase the resident population at RU–N to build community and stimulate supporting private development
- Integrate amenities and social spaces with campus transit nodes

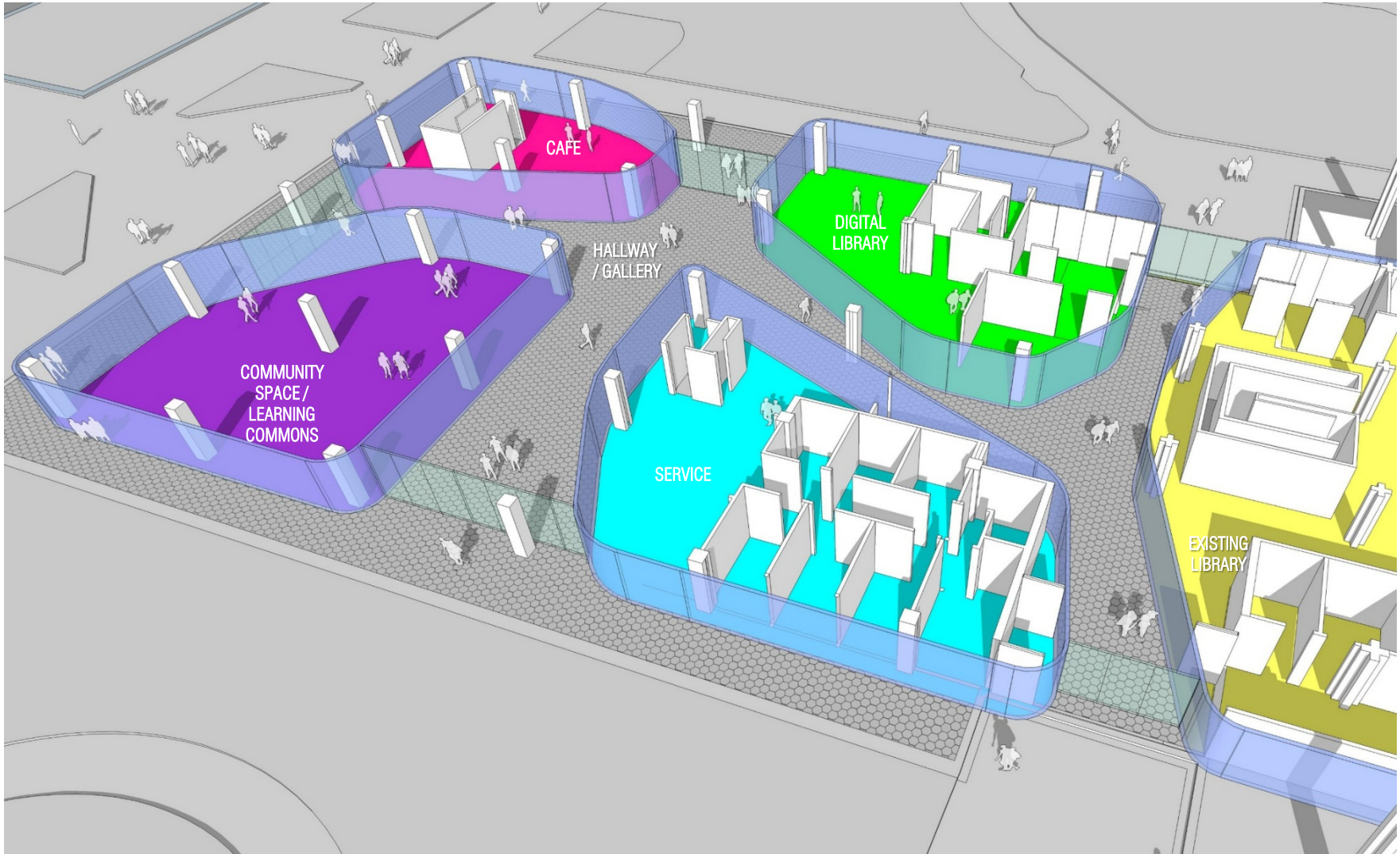
# Transit Hub



# Implement Technology for the Modern Campus

- Maintain an up-to-date, effective technology infrastructure across campus
- Enhance access to information through seamless wi-fi that extends from campus buildings to Military Park
- Revitalize the library as an information commons and a hub for intellectual interaction

# Dana Library Ground Level



# Enhance the Campus Core

- Embrace the community through public space
- Enhance campus gateways and the approach into the campus core
- Strengthen the campus center and the library as open environments for collaboration and exchange
- Use landscape to connect buildings and places, improve the public space, and public safety



# Robeson Campus Center



# Robeson Campus Center



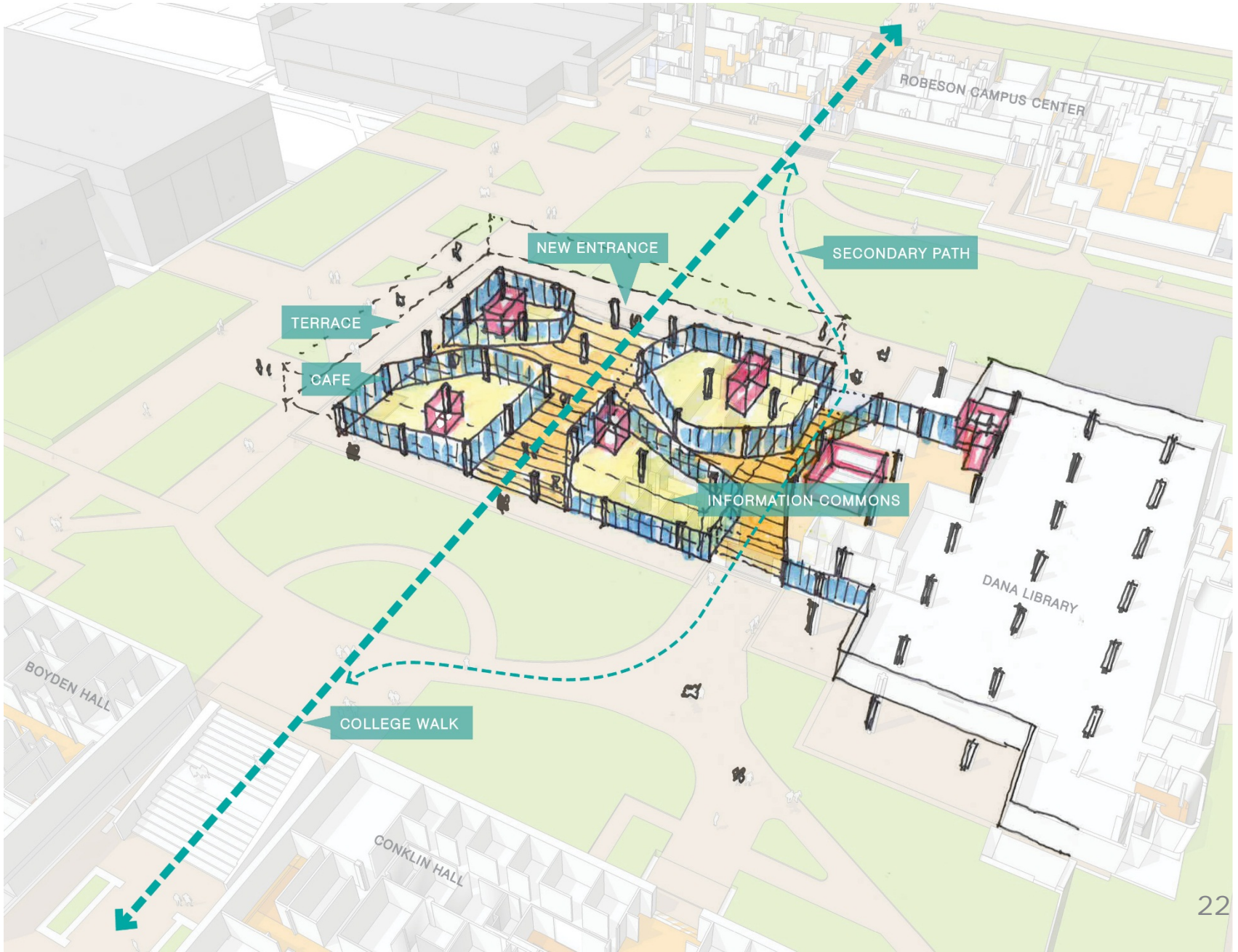
# Social Staircase



# Dana Library





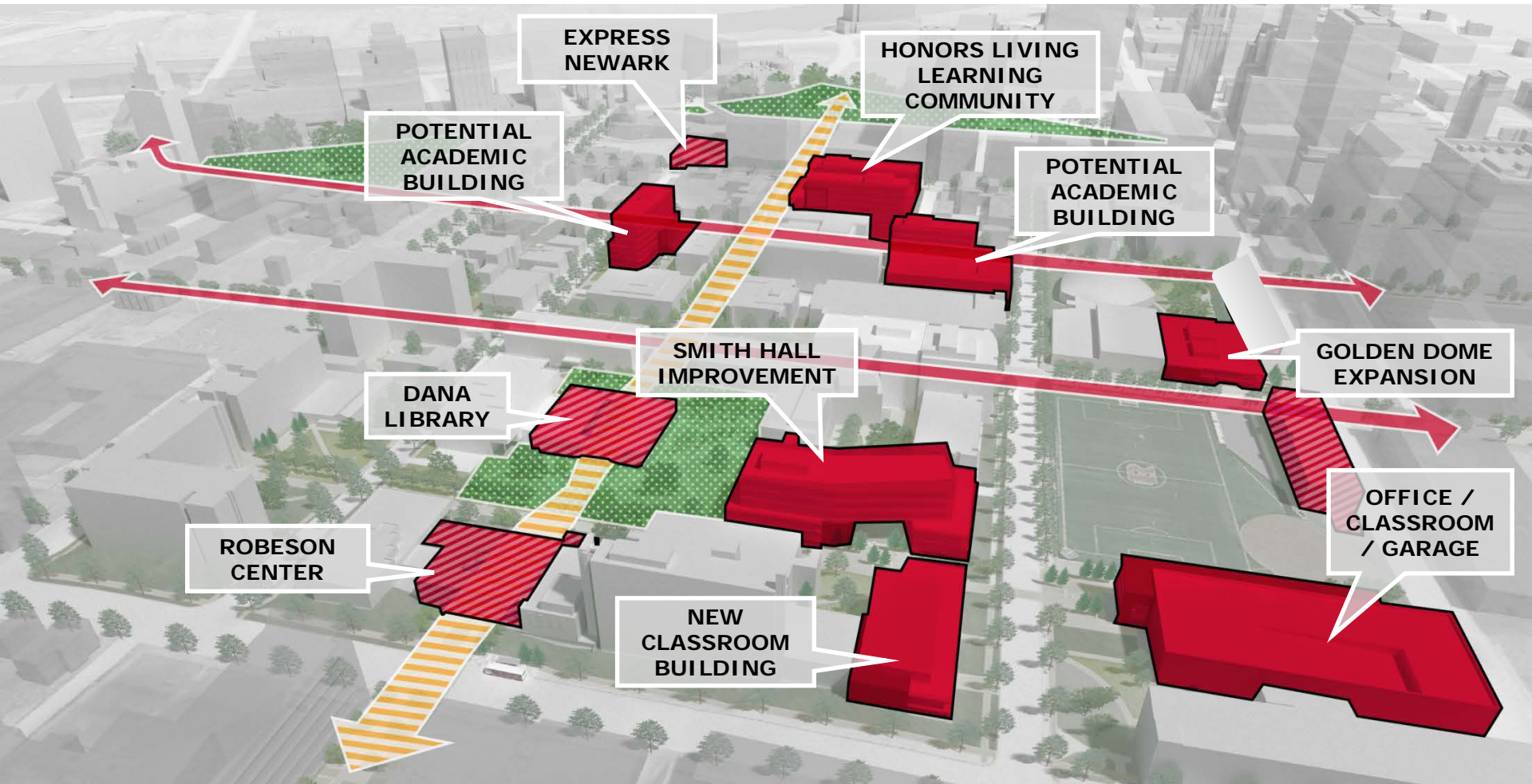


# College Walk

*Exterior view of College Walk and transit hub, looking towards the Dana Library*

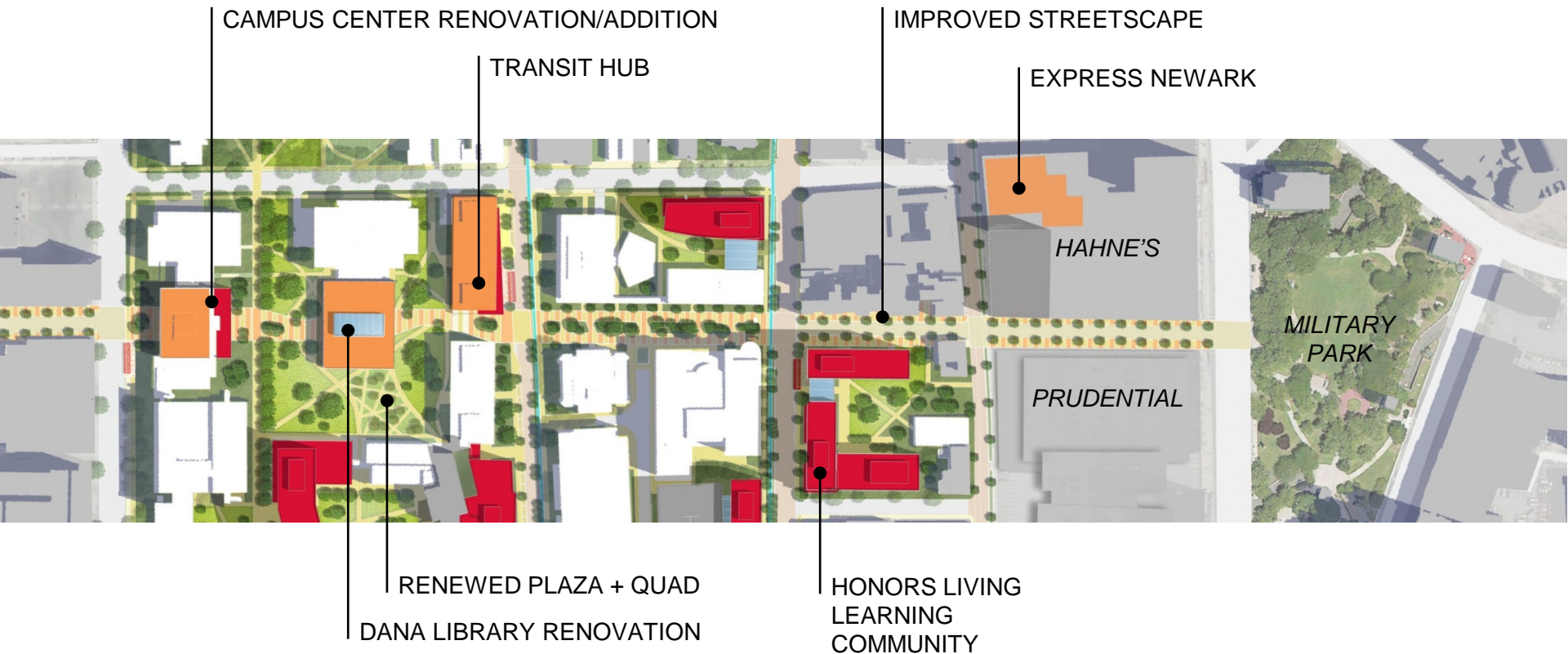


# College Walk Footprint





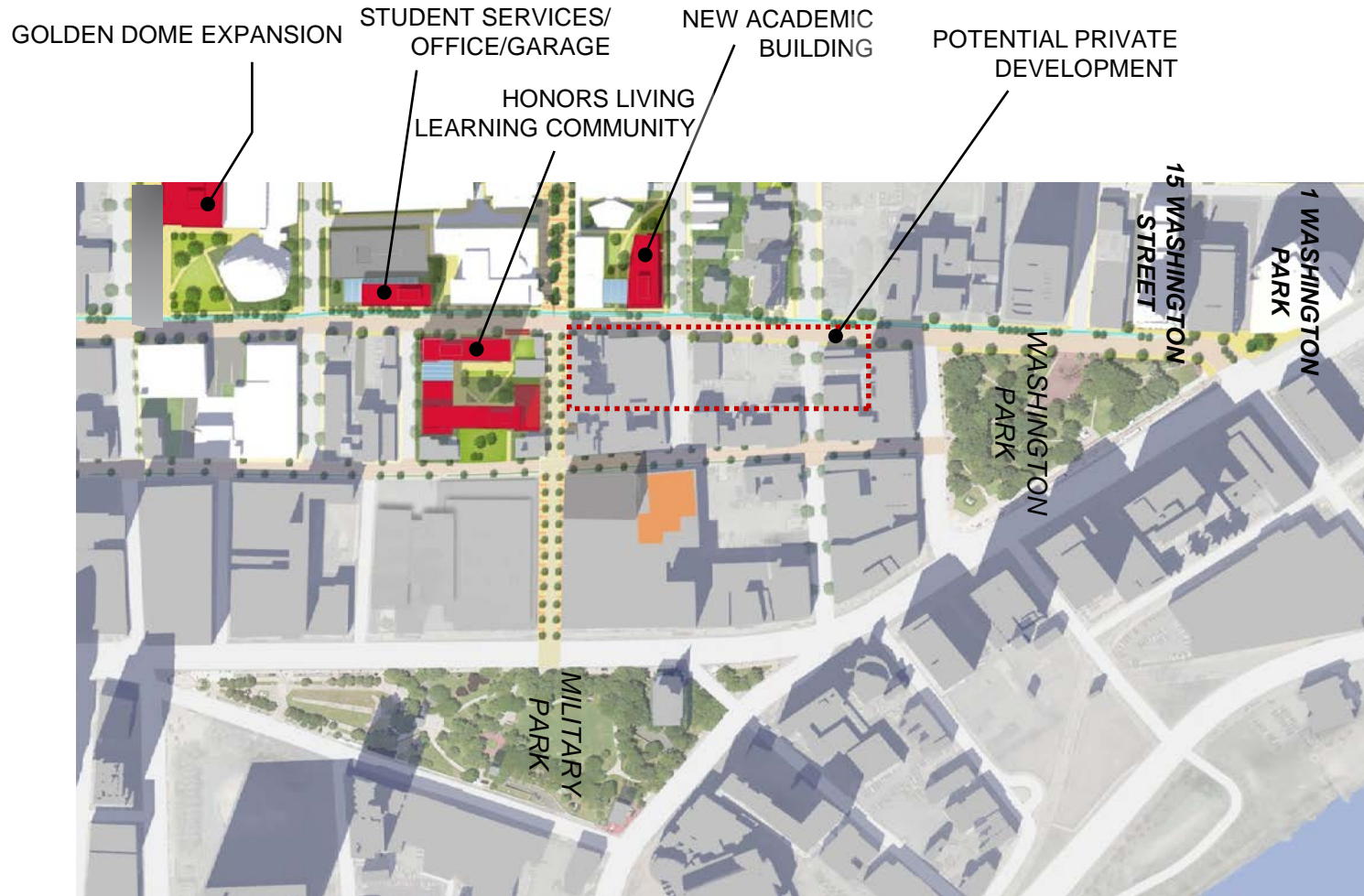
# College Walk Footprint, *Aerial View*



# Washington Street Footprint, *Aerial View*



# Washington Street Corridor, *Aerial View*



15 Washington



1 Washington



Copyright 2010 Foong Soon Cheong

# Projects in Progress

- 15 Washington (including performance space in the Great room)
- Express Newark-Hahne's
- Life Sciences II
- Classroom Improvements this summer (25-30 classroom upgrades)
- Enhanced wi-fi – indoor and outdoor
- Improvements to Stonesby Dining Hall
- Robeson Lounge Spaces

## Next Steps:

- Three Year Classroom Upgrade Program
- Transit Hub
- Honors Living Learning Community
- Street and Landscape Overlay
- Transportation and Parking study